



*brighton art guild's  
2nd Annual  
Show Us the Monet!  
Sponsorship Gala & Art Auction*

*2009  
Auction Catalog*

# About the Brighton Art Guild

The Brighton Art Guild began in 1999 when a small group of artists met at the Brighton District Library to discuss the formation of a visual arts organization for the Brighton area. The goal was to benefit the artists and the community. A decision was made to canvass the community to determine the interest in such an undertaking.

Thirty artists attended the first open meeting in October 1999, and the Guild has met monthly since then. In 2001, the Guild received 501(c)(3) non-profit tax-exempt status from the IRS.

Our members are active volunteers who manage the Guild's programs, create and maintain the Guild Web site; publish a monthly e-newsletter available on the Web site; and have contribute to a variety of community programs and organizations.

## GUILD OFFICERS

Pamela Day, president

Beth Gasperich, vice president

Amy Haslehuhn, treasurer:

Tammy Meldrum, secretary

## GUILD BOARD OF DIRECTORS

Hank Cornille

Linda Dunn

Phil Gibbon

Norma Gray

Jerry Hosier

Betty MacLeod

Carole McGeehan

## GUILD PROGRAMS

• **General Membership Meetings**—The Guild holds its meetings on the first Wednesday of each month at the Brighton District Library, with a program of interest for visual artists. The public is always welcome. *Chair:* Jerry Hosier

• **Art in Public Places:**

**Art at the Library** celebrates its tenth year. These juried exhibitions feature 2D and 3D artists exhibiting together for several weeks, with opening receptions where visitors can meet with the artists. *Chair:* Peggy Brewer

**Art at Genoa** displays bi-monthly solo exhibits by Guild members on the second floor and lower level lobbies at the Genoa Medical Building. *Co-Chairs:* Sue Argiroff and Bev Dinsmore

Our mission is to foster and encourage the expression of the visual arts.

**Art at CrossPointe** displays bi-monthly solo exhibits by Guild members in the lobby of the CrossPointe building in the Genoa Medical Park. *Co-Chairs:* Betty Lewis and Nancy Ward

**Art at Advanced Orthopedics** displays bi-monthly exhibits by Guild members in the Advanced Orthopedics offices at Genoa Medical Center. *Acting Chair:* Beth Gasperich

• **Education Initiative**—New Guild President Pamela Day has set her goal—establishing an educational program, offered to the community for young and old alike. The Guild will develop the structure and work to help the community express themselves in the visual arts—hands on—by connecting them with local artists. *Co-Chairs:* Mary Light and Pamela Day

• **Show Us the Monet!**—2009 is the Guild second annual sponsor celebration gala and art auction. Held at Brighthorn's historic Hynes House, the home of our hosts, John and Deb Tunis. *Chair:* Linda Dunn

• **Open Studios: Visit Where the Artists Work**—The Guild partners with Run Away with the Arts in Pinckney (RAAP) for this annual self-guided studio tour. A collection of area artists open their studios for the public to enter and enjoy. *Chair:* Carole McGeehan

• **Scholarship Program**—The Norma Gray Scholarship for college students launches in 2008, as well as the summer internship program, focusing on career, service and community outreach. The Guild's annual high school Scholarship for the Visual Arts is awarded in November. *Chair:* Carole McGeehan

• **Kaleidoscope**—2008 marks the ninth all-member Kaleidoscope exhibition. This is the one exhibition each year where all members show their work together for a very exciting and eclectic show. *Chair:* Beth Gasperich

• **Art at the Millpond**—Lending an atmosphere of festivity to summer Friday evenings, Guild members display, create and sell their art at the Brighton Millpond. Folks enjoying an ice cream, or taking a stroll along Main Street after dinner may wander by and visit with the exhibiting artists. *Chair:* Phil Gibbon

• **Art Harvest**—Now in its third year, Art Harvest brings together diversified and exceptional local art. To foster young talent, the Guild proudly includes college and high school categories, offering some young artists their first formal exhibition experience. *Chair:* Anne Marie Buckman

# *Many Thanks to Our Event Supporters and Staff*

Show Us the Monet! 2009 is only made possible with the support of the donating artists listed in this catalog, the local area sponsors donating their services and products, and the talents of the all-volunteer committee of dedicated Guild members—coordinated by our effervescent and irreplaceable chairperson, Linda Dunn.

## **MONET SPONSORS**

**John & Deb Tunis**  
Brighton

## **WYETH SPONSORS**

**Complete Abandon**  
Al Sutterfield | 734-223-3414

**Lee and Associates of Michigan**  
248-351-3500 | [www.lee-mi.com](http://www.lee-mi.com)  
100 Galleria Office Centre, Suite 401, Southfield

**Ore Creek Jewelers**  
Al Hummer | 810-227-4890  
[orecreek128@yahoo.com](mailto:orecreek128@yahoo.com)  
132 W. Main Brighton

## **BENEFACTORS**

**Four Seasons Florist**  
Bonnie Sanberg | 810-229-2928  
[www.brightonflorist.net](http://www.brightonflorist.net)  
9912 E. Grand River, Suite 600, Brighton,

**Pi's Asian Cuisine**  
Tony Pi | 810-220-8181 | [www.pismngt.com](http://www.pismngt.com)  
8262 Cross Street, Brighton

**Re-Style Staging**  
Kathi Presutti | 810-333-  
5240[www.ReStyleStaging.com](http://www.ReStyleStaging.com)

**Sarah Jane Photography**  
Sarah Hurtubise | 734-878-0286  
[sarah@sarahjanephoto.com](mailto:sarah@sarahjanephoto.com)  
[www.sarahjanephoto.com](http://www.sarahjanephoto.com)  
356 E. Main St. Pinckney

## **PHILANTHROPIST**

**La Meena Mediterranean Grill**  
Haytham Haydai | 810-227-4400  
[www.lameena.com](http://www.lameena.com)  
101 Brookside Ln., Brighton

## **PATRONS**

**Buon Gusto**  
Sal & Sylvia Viviano | 810-229-7770  
501 W. Main St. Brighton

**Keehn Funeral Home**  
Laura Kelley | 810-229-9871  
706 W. Main St. Brighton

**Parris Asthma and Allergy**  
810-229-2887 | 609 W. Main St. Brighton

**Majestic Maid Service**  
Amy Connor | 734-740-1578

**Pawsitively Spoiled**  
Leonie Darnell | 810-227-2300  
[pawsitivelyspoiled@att.net](mailto:pawsitivelyspoiled@att.net)  
434 W. Main St. Brighton

**St. George Lutheran Church Amy**  
810-229-6670 | 803 W. Main St. Brighton

**Stillwater Grill**  
Bob Restler | 810-225-1800  
[www.stillwatergrill.com](http://www.stillwatergrill.com)  
503 W. Grand River Ave, Brighton

**Sushi Zen**  
Yoon Kim | 810-225-3330  
[www.sushizenbrighton.com](http://www.sushizenbrighton.com)  
114 W. Grand River Brighton

## **FRIENDS**

**Duncan Disposal**  
Tom & Randy | 248-437-8600  
[www.duncandisposalsystems.com](http://www.duncandisposalsystems.com)  
P. O Box 727 South Lyon, MI 48178

**Hungry Howie's Pizza of Brighton**  
Danny | 810-227-3771  
603 W. Grand River Brighton



## 1 Al Hummer "Show Us the Monet! Pendant"

*Turquoise chrysocolla druzy set in 14K gold and sterling silver*

Suggested starting bid: \$200

Al Hummer, of Brighton's Ore Creek Jewelers, has generously designed, created and donated a unique, one of a kind piece to the auction for Show Us the Monet! The piece is a lovely Turquoise chrysocolla druzy pendant set in 14K gold and sterling silver. The retail value of this piece is \$1,100. (The necklace is not included.)

In addition, during the week following Show Us the Monet!, April 5th–11th, Ore Creek Jewelers

is generously donating to the Brighton Art Guild **20 percent off** of the retail purchase price of any jewelry bought during this time period. Stop by and see what Al might have especially for you!

### ***What's a Druzy?***

Druzyes are formations of tiny quartz crystals that form within or on the surface of other stones. They are formed when ground water carrying dissolved silica is forced into a porous area of the rock, rapid cooling often occurs, causing the formation of tiny crystals on the surfaces or in cavities of the rock. The clear crystals often form on top of previously deposited minerals. Other minerals found in this form are malachite, hematite, psilomelane, uvarovite, pyrite, carnelian and colbalto-calcite.



## 2 Anne Marie Buckman "Iris"

*Watercolor, 22½" x 30" (framed)*

Suggested starting bid: \$95

"Irises have always intrigued me. I love both their color and their texture. To me, an iris about the spring and new beginnings."

Anne Marie has painted over 40 years.

During that time she has taught adult painting, been in numerous shows, and received many awards. Her works are currently on display at three galleries (Synchronicity in Glen Arbor, Lawrence Street in Ferndale, and the American Gallery in Ohio) and in two private shows.

Contact Anne Marie at 810-225-9005, ambuckman@aol.com.

Nancy Gray **3**  
"By the  
Water's Edge"

Collage and  
acrylic,  
18¾" x 22¾"

Suggested  
starting bid: \$60

Nancy created this  
about six or seven  
years ago during a  
time when she  
was experiment-  
ing with collage



**My Refuge**

*My refuge back when I was young;  
My "castle in the air";  
I built in my mind and then,  
Put special dreams in there.*

*Tho' now I'm older, when I'm down  
Or feeling stress or guilt;  
My best escape is: close my eyes ...  
Go back to what I built.*

*My tension's ease, the dark improves,  
Imagination flows;  
It's there for me when'ere I need,  
My castle's where I go.*

as her means of artistic expression. She entered it in the Milford Poetry and Art Show and received one of the the top awards given out. The poem that accompanied the picture and was part of the award is shown below. This was one of her more successful pieces ...she sold more copies of this than any other of her pictures.

Nancy was one of the founding members of the Brighton Art Guild and was a very active member for about 11 years. Even though she developed ALS (Lou Gehrig's Disease), she kept painting. Her last work was completed about a month before she died. The "Show Us the Monet!" fundraiser last year was the last Guild event she was able to attend.

Nancy died in June 2008.



Contact Ed Gray at [edwardgray3@gmail.com](mailto:edwardgray3@gmail.com).

Linda Preece **4**  
"Splash of Color"

Pastel, 15 ½ x 18 ½ ".(framed)

Suggested starting bid: \$100

"This piece was painted en plein air  
2008, at Frederik Meijer Gardens in  
Grand Rapids. The gardens were burst-  
ing with color last May. Inspiration for  
painting was everywhere, and the im-  
mediacy of pastel worked well to capture  
the vibrancy of color found there."



Linda Preece is a local artist who paints in both pastel and oil.

Contact Linda at 517-546-7572, [lpreece@ameritech.net](mailto:lpreece@ameritech.net).



**5 Nancy Kern**  
**"The Capitol Building in Lansing"**

*Computer-altered photography,*  
*16" x 19" (framed)*

Suggested starting bid: \$25

Nancy attended the Center for Creative Studies in Detroit. She lived in New York City for 15 years and was influenced by the art and artists there. Now living in South Lyon, Nancy does photography and paints.

Contact Nancy at 248-446-2002, [nancyxyz@sbcglobal.net](mailto:nancyxyz@sbcglobal.net)



**6 Nancy Kern**  
**"Cooley Gardens"**

*Computer-altered photography,*  
*18½" x 22¾" (framed diptych)*

Suggested starting bid: \$25

See above for information on Nancy.



**7 Linda Dunn**  
**"Order in Disorder"**

*Acrylic on gallery wrap canvas, 24" x 30"*

Suggested starting bid: \$200

"Life has been tough for many people this year, myself included...but life is still beautiful!

"Painting is my love, my passion, my escape. It is a place that only I alone can go."

Contact Linda at 248-535-0669,  
[memoryinoils@yahoo.com](mailto:memoryinoils@yahoo.com)

Sarah Grusin **8**  
"Autumn Inspiration"

*Acrylic, 1'X2' (framed)*

Suggested starting bid: \$65



"During a beautiful autumn morning, I took the rowboat out on Winans Lake. The lake was glassy and the reflections so

captivating. But within a few minutes, I realized the boat had a small leak which was upsetting the spiders that lived in the boat. My sketchbook and paintbox were crawling! I stayed out as long as I could, because the colors were so perfect.

A few days later I recreated the scene inside.

"I have taken a number of workshops in Virginia where I lived until last summer. I retired from the Smithsonian's Museum of Natural History, where I was a writer for the exhibit office. Since I moved, I've been enjoying art. Over the past few years I've been in several group shows."

Contact Sarah at 810-355-1127, sarahgrusin@gmail.com.

Gayle Sanchirico **9**  
"Ho Hum"

*Watercolor, 12" x 15" (framed)*

Suggested starting bid: \$30



"I was amused by this man's boredom while the women chatter away."

Gayle (Sherritt) Sanchirico was born in Columbus Ohio, and has been creating art since childhood. She attended Columbus Collage of Art and Design and art illustration courses at Ohio State and channeled her artistic talents through her early career in Visual Presentation and Merchandising. Living in Ohio, California, Kentucky, Nebraska, Wisconsin she attended various art workshops across the country. For the past 11 years she has been

painting in her home studio in Brighton Township Michigan. She explores the endless possibilities of acrylic, watercolor, pastel, colored pencil and original mixed techniques as a way to process her intuitive contemporary style. Gayle has been exhibiting and selling her art in solo and group shows since 2000, receiving numerous awards and honors.

Her paintings are in many private collections.

To visit Gayle's studio by appointment, phone 810-220-8620, or e-mail sanchirico@comcast.net



## 10 David Parr "Pathways"

Clay, 19" x 12"

Suggested starting bid: \$150

"This is a wall relief of clay done with a raku finish."

After David Parr turned over his insurance agency to his son he wondered what was next. A couple of continuing education classes in ceramics later he knew that his

second career would involve ceramic art. A national known sculptor, Robert Bielat, encouraged his progress and challenged him to create wall sculptures. The wall sculptures with their unique textures and finishes have been into juried shows and won numerous awards. David hopes you enjoy his creations and invites you to see more during the Brighton Art Guild's Open Studios tour in 2010.

Contact David at 810-225-4984, [dpparr1@yahoo.com](mailto:dpparr1@yahoo.com).



## 11 Cindy Cillick Geist "Jacket"

Fiber art to wear, one size fits all

Suggested starting bid: \$40

"This is a one of a kind art to wear jacket. It is made of a shear synthetic fabric in blue, orange, black, lime green and fushia. It is very flattering for all figure types, and dresses up any outfit. Machine wash gentle."



Cindy Cillick Geist is a renowned quilt artist. Her work has been shown in galleries and exhibits around the world. She also creates one of a kind purses, scarves and art to wear.

Contact Cindy at 810-229-2861, [shequilts@yahoo.com](mailto:shequilts@yahoo.com).

Robert Adams **12**  
"Quince #2"

*Watercolor, 20" x 27" (framed)*  
Suggested starting bid \$100

"The dark background of the original photograph intrigued me, while the wonder of watercolor in the final product created the illusion of a dark velvet curtain, contrasting with the white and pink Quince flowers and vase reflections. The interesting shapes of the vase and bowls added additional pleasure to the composition. I hope you find as much enjoyment in viewing this work as I experienced while creating it.



"I enjoy the challenge of watercolor, particularly happy accidents and the requirement to lay the paint down and wait to see what the pigment chooses to create. Practicing 'doing by not doing' and realizing that the paint and not the painter are in control are valuable lessons in my vocation and avocations, all of these, themselves, works in progress."

Contact Robert at 810-227-4185, [Robert\\_Adams@ihacares.com](mailto:Robert_Adams@ihacares.com).

Andy Gasperich **13**  
"Void"

*Photograph, 22" x28" (framed)*  
No suggested starting bid offered.

"This photo was taken at the Packard Motor plant in Detroit. It is a HDR photograph, a process of tone mapping together with bracketed exposures of normal digital images. The Packard plant was closed in 1956 and left to rot. I was drawn to the abandon Packard Motor plant for its blatant neglect, allowing me to photograph its urban decay and transforming an eye sore into a beautiful image."



"I was born and raised in Michigan.

I am a Graphic Designer, with an associates degree from Washtenaw Community College, and an amateur photographer. I've been exposed to the art world at an early age and plan on continuing my young career within its borders."

Contact Andy at 810-923-4907, [far.too.late@gmail.com](mailto:far.too.late@gmail.com).



**14** Norma Gray  
**"Afternoon Delight"**

*Signed limited edition lithograph (original: watercolor),  
35" x 28" (framed)*

Suggested starting bid: \$300

"The inspiration for this artwork is the creek that is in our backyard, and the magic of standing on the dam looking upstream at what nature has created."

Painter and teacher for 30 years, Norma's work has been in many local, regional and national juried shows. Also an art advocate for the local arts.

See [www.normagrayart.net](http://www.normagrayart.net). for information on upcoming classes, and her story.



**15** Jennifer Firestone  
**"Saggar-fired Vessel"**

*Clay, 7" x 7"*

Suggested starting bid: \$60

"My pottery is thrown on the wheel. When the pots are not quite dry they either are burnished or coated multiple times with a very fine clay slip called terra sigillata and buffed, sometimes both.

Burnishing is accomplished by rubbing the pot with a smooth stone until it is totally smooth and reflects the light. This takes considerable time and can be a mesmerizing and meditative practice, time

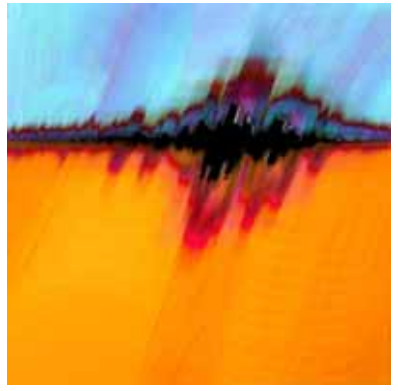
to honor Mother Earth for providing the material from which my work is made. The pots are then thoroughly dried and fired in the electric kiln to 1780° F.

"Next they are placed in saggars (clay vessels with lids) along with various mineral salts and other combustibles, such as weeds, seaweed, wood shavings and flowers. Sometimes I wrap wire or tape around the pots to produce differing effects. The saggars are then fired in a gas kiln to 1800°F and allowed to cool before opening. After all the elements of preparation it's always thrilling to open the saggars and find the random lovely colors and patterns produced by the interplay of earth and fire. The pots are waxed to preserve their surface. No glazes are used and the pots are porous... not intended to hold food or fluids."

Contact Jennifer at 313-580-8026, [j3nnifire@comcast.net](mailto:j3nnifire@comcast.net).

Phil Gibbon  
**"Sedonascape" 16**

*Digital painting, 16" x 16" (framed)*  
Suggested starting bid: \$50



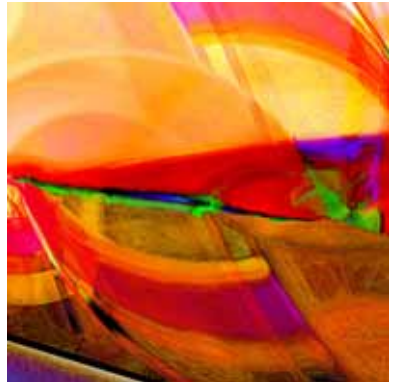
"In my former life as a graphic designer, if I was pleased with the end product and able to excite my clients by surpassing their expectations, then my day was complete. Today as God guides my hand while I'm 'painting' with my mouse, I experience a joy like I've never known before. When others appreciate what I've created, that's just icing on the cake!

"I prefer to call my art 'digital painting' as opposed to 'computer art' Contrary to a popular misconception, the computer does not create the painting on its own. I spend many hours—even days—on some pieces to achieve that special look."

Contact Phil Gibbon at 810-227-7970, phil.gibbon@att.net,  
Web site: [www.cyberalley.com/MouseArt/](http://www.cyberalley.com/MouseArt/)

Phil Gibbon  
**"Oasis Sunset" 17**

*Digital painting, 16" x 16" (framed)*  
Suggested starting bid: \$50



See above for information on Phil.

Nancy Roth  
**"Green with Envy" 18**

*Acrylic on gallery wrap canvas, 12" x 16"*  
Suggested starting bid: \$53



"I painted Green with Envy last spring outdoors next to the lake in my garden which was full of Bleeding Hearts.

"These early blooming spring flowers herald the awakening of another growing season and energize my desire for artistic expression."

Contact Nancy at 810-632-9787, nancyr@umich.edu.



## 19 Marie Davis "Eurydice"

*Photograph, 8" x 12" (framed)*

Suggested starting bid: \$50

"This is a black and white photograph of a semi-nude female with textural overlay. I am fascinated by the forms, lines and beauty of the human figure. This print captures the effects of texture, light and shadow, hinting at the mysterious."

Marie has been a practicing artist for more than 20 years. She has worked in many mediums, most recently in figurative sculpture. Marie's bronze "The Children" is on permanent display in the city of Brighton. Her latest work, "Hope Eternal," won awards at the Guild's 2008 Art Harvest exhibition. She has worked in the Design

Studios at Ford Motor Company and Navistar International. Marie is a fine arts graduate of Indiana University and lives in Brighton.

Marie's sculptures will be on exhibit at the Brighton District Library July 24-September 10, with the opening reception being held on Sunday, July 26, from 2-4pm.

Marie can be reached at 810-231-7784, [mariedavis784@yahoo.com](mailto:mariedavis784@yahoo.com).



## 20 Jerry Hosier "Playa"

*Oil on canvas board, 8" x 10"*

Suggested starting bid: \$35

"One of my all time favorite places to visit is the Mexican Yucatan. Playa Del Carmen, with its' beautiful white sand beaches and gorgeous, sparkling water was my inspiration for this painting."

Jerry Hosier is an award winning oil painter, and one of the founding members of the Brighton Art Guild. Besides his contemporary realistic painting, he was a Judge in the 2006 and 2007 Brighton Art Festival, the 2007 Ann Arbor Art Fair, and has years of experience in all aspects of exhibiting,

including organizing and installing. Jerry is past president of the Brighton Art Guild, active with the Michigan Plein Air Painters, and member of The Oil Painters of America.

Contact Jerry at 734-878-6057, [jhwaterworks@gmail.com](mailto:jhwaterworks@gmail.com)

Jan Wolyniak  
"Omega" 21

Photography/Graphic Design, 12" x 18" (framed)  
Suggested starting bid: \$40



"This is a design that shows the Millpond boardwalk through an adjoining black metal fence. The bent crossmembers of the fence form the symbol Omega, hence the title of the piece."

A new member of the Guild, Jan's photographs have juried into various exhibition and received award ribbons. He has also exhibited locally in various coffee shops, libraries and civic buildings. He has had national exposure in the photography trade magazine *Shutterbug*. Jan is launching into graphic design based on his photography, and recently had three pieces juried into Brighton Presbyterian Church's Mission Art and Music exhibition. Jan is a retired psychologist and alumnus of the University of Michigan.

Contact Jan at 248-437-9849, [kjwolyniak@yahoo.com](mailto:kjwolyniak@yahoo.com).

Jan Wolyniak  
"Brighton Gorge Falls" 22

Photography/Graphic Design, 18" x 23" (framed)  
Suggested starting bid: \$25



"My composition is taken from my summertime photograph of Brighton's trademark and lovely Millpond boardwalk, and retains the boardwalk's unique lighting, bright blue railings and colorful red-flowered hanging plants. The photograph has been re-envisioned into a realistic though fantasy landscape with a sloping ramp descending to a terrace above a misty waterfall cascading into a stained-glass pool. This unique composition is one of a kind, and is expressly designed for Show Us the Monet!"

See above for more information about Jan.

Jan Wolyniak  
"Boardwalk Crecent" 23

Photography, 22" x 26" (framed)  
Suggested starting bid: \$40



"Portrayed in this photograph is a curvature of the pond boardwalk (and shadow) near its northern extremity, contrasted by the reflection of the summer sky. The white flecks are floating cottonwood puffs."

See above for more information about Jan .



## 24 Pamela Day "Nobody's Home"

Terra cotta, patina and colored pencil  
16"h x 13"w x 4"d  
Suggested starting bid: \$150

"From my first Art at the Library Show in 1999 until recently I continue to explore birds—more recently crows in particular. Currently a series of jester-like characters has me very excited—most often representing them as free-standing sculptures of heads and shoulders, and as a wood

engraving which allows me to make a series of prints of my images—such as 'the jesters.' Very often, but not always, birds are included or implied in these pieces.

"'Nobody's Home' is oxide-stained terra cotta clay, with additional patina, including coloring the surface with Prisma colored pencils. I like working on the surface of my pieces with the colored pencils. It gives me control, gradation and subtlety of color, unlike using more traditional methods of color application on clay—such as glaze.

"Exploration of expression and feelings in my pieces captures an attitude that may then be interpreted by the viewer. Stylized-realism exists in all my work, emphasizing balance, movement, color and texture."

Contact Pam at 248-624-3298, [pameladay@ameritech.net](mailto:pameladay@ameritech.net).



## 25 Pamela Day "the jesters"

Wood engraving, signed and numbered print (18/50), 5½" x 3½" (unframed)  
Suggested starting bid: \$30

"End-cut wood engraving has piqued my interest, and only recently had I the opportunity to learn the process and techniques. It is the same type of prints found illustrating many older books, magazines, and even the newspapers. Cutting the block is a very delicate and often time-consuming process. What I appreciate about printmaking is the artist's involvement in creating the image on the surface of the linoleum, wood or metal, and personally 'pulling' each print. The multi-

plicity of the process allows me to share the image with more people than with a one-of-a-kind work of art. "the jesters" is the first end-cut wood engraving I have executed. It's image was reduced from my original sketch of the current clay piece on which I am currently working. This in itself was fun for me to be able to do the same image in print, and then clay.

See above for information on Pamela.

Judy Enright  
"The Ball" 26

Limited edition print (original: oil),  
19" x 25" (unframed)

No suggested starting bid offered.



"My art is a construct of ideas derived from many sources to present insights into universal truths and explore the concept of paradox in our ever-expanding world. These original oil paintings represent modern folklore developing a new mythology. Most series include a musical theme, while all the series show my view of

the human condition along with our inner kinship."

Contact Judy at 810-229-7385, judyenright@sbcglobal.net.

Carole Skog McGeehan  
"Inauguration Day 2009, 2:30 p.m." 27

Acrylic on gallery wrap canvas, 18" x 24"

No suggested starting bid offered.



"I've been working on a series based on my experience attending this year's inauguration.

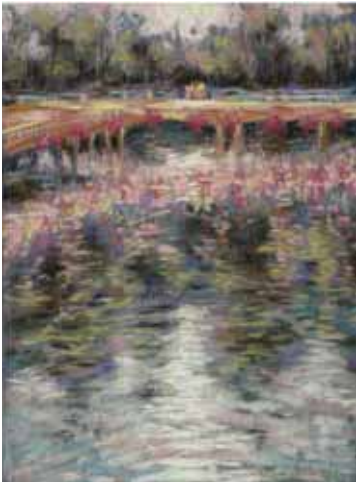
I found the amazing spirit of the day palpable among the largest crowd I've ever encountered at the D.C. Mall—joyous, welcoming and healing.

"In my paintings I try to capture a sense of the intimate human experience in any given environment. This piece records the train ride back to the Maryland suburbs after the event—the Metro Red Line coming out of Union Station."

Carole is a board member and publicity chairperson for the Guild, and serves on the City of Brighton's Arts and Cultural Advisory Commission. She moved back to her homestate of Michigan in 2005, after 17 years in the Washington, D.C. area. Now in the 31st year of her graphic design career, Carole is principle graphic designer with U.S. Immigration and Customs Enforcement (ICE, formerly known as INS), the largest investigative arm of the Department of Homeland Security.

Carole's paintings will be on exhibit at the Brighton District Library during May and June.

Contact Carole at 810-229-2132, clsmcgeehan@comcast.net



# 28, 29

Peggy N. Brewer  
**"Brighton  
Millpond Series  
Note Cards"**

*Set of four  
note cards*

Suggested starting  
bid: \$5 per set

These sets of four  
note cards are  
based on two  
images in the

Brighton Millpond series of pastels created by the artist: "Boardwalk at Millpond" and "Reflections at Millpond." The impressionistic style complements the Millpond and reveals stunning colors.

Cards are 4¼" x 5½" with matching envelopes in cellophane packaging, perfect for gift giving for Mother's Day, birthdays and other events.

Working primarily in pastels and watermedia, Peggy's technique uses expressive color with a contemporary palette. She prefers to work from life, relying on photos only for later reference. She has been widely exhibited in local, regional and solo shows, and is a member of the Brighton Art Guild, Great Lakes Pastel Society, Ann Arbor Art Center, and others.

Contact Peggy at 248-568-5658, [PNBrewer@aol.com](mailto:PNBrewer@aol.com).



# 30

Peggy N. Brewer  
**"Buggy with Flowers"**

Mixed media, 16" x 20" (framed)  
Suggested starting bid: \$35

Second in the "Mackinac Moments" series, "Buggy with Flowers" captures the exuberance of summer on Mackinac Island in this mixed media art piece.

See above for information on Peggy.

Mary Light  
**"Kolka Creek Marsh" 31**

*Print (original: pastel), 16" X 20" (framed)*

Suggested starting bid: \$50

"I am a plein air painter and I frequently visit this area near Grayling, state land, because there is so much beauty in nature and wildlife there. I love to paint interesting marshes and waterways. This work was done in soft pastels, on archival Wallis museum grade sanded paper with an underpainting of pastel and turpenoid wash.

"I am primarily a self-taught artist. I have attended many workshops and classes with well-known artists. Also, I have donated murals to the Woodland

Health Center in Brighton. I have had solo shows locally, including the Howell Chamber of Commerce, and I am currently represented by the Blue Heron Gallery in Elk Rapids, Michigan. I am a member of Brighton Art Guild, Great Lakes Pastel Society and Michigan Plein Air Painters. I also do landscape and portrait commissions, as well.

"To view my portfolio or discuss commission work I can be reached at 517-545-5696 in the evening, or e-mail [bilandmarlight@yahoo.com](mailto:bilandmarlight@yahoo.com)."



Hank Cornille  
**"Canyon's Edge" 32**

*Watercolor, 19" x 23"*

No suggested starting bid offered.

"This piece represents the overall sense of being at the edge of the Grand Canyon—the sky, the mountain, and the little tree of life clinging to the edge."



Hank is a Brighton Art Guild board member. Hank's watercolors and figurative sculptures have both garnered award ribbons at Guild exhibitions. His watercolors have also received several awards from the Michigan Watercolor Society, of which he is a member. Hank recently had one-month solo exhibit at the Studio at Gulf & Pine in Anna Maria, Florida.

Contact Hank at 810-225-9032, [cornilleart@sbcglobal.net](mailto:cornilleart@sbcglobal.net).



### 33 David Bogdan "Solitude"

*Photography, 11" x 14" matted & framed*  
No suggested starting bid offered.

"Ypsilanti's Ford Lake on a foggy, rainy January morning. I waited patiently three years before the conditions were just right for this piece."

"I have pursued many forms of artistic expression throughout the years. I have found that using both large format (film)

and digital capture, I can maintain a high degree of realism and exactness in my work. Photography as an art form gives me the opportunity to share, with others, what the world looks like through my eyes. I hope you enjoy the view!"

Contact David Bogdan at 586-615-4859, [dbogs@comcast.net](mailto:dbogs@comcast.net).



### 34 David Bogdan "Reflections of Zion"

*Photography, 24" x 20" limited edition gallery wrapped canvas*  
No suggested starting bid offered.

"While off the beaten path in Zion National Park, I discovered this breathtaking scene in a difficult to navigate canyon."

See above for information on David.



### 35 David Bogdan "Smokey Mountain Morning"

*Photography, 11" x 14" limited edition matted & framed*  
No suggested starting bid offered.

"I captured this while exploring the upper reaches of the Smokey Mountains in Southern Tennessee."

See above for information on David.



## Complete Abandon

Complete Abandon is a local band that has been entertaining audiences for nearly 14 years. They have been written up in the Detroit News/Free Press, and regularly perform at many Chamber of Commerce functions and events in both Livingston and Oakland Counties. They have played at Howell's Balloonfest (every year since the late 1990s), have opened for Brighton's Smokin' Jazz & Barbecue Blues Festival and at the Livingston County Fair.

They have provided music to enhance the events put on by a large number of for- and non-profit organizations all around southeast Michigan. They have traveled many miles in our great state to perform benefit concerts for worthwhile causes. The band is available at very reasonable rates for large and small venues.

Their sets include a wide variety of musical styles, and many original songs. Bill Preston and Pete Perez play guitar and do vocals. Al Sutterfield plays bass, keyboards and does vocals. Ken Berry is the percussionist. Besides working full time and raising families, all four have been playing professionally in various groups since they were young men.

For more information, please feel free to contact Al at 734-223-3414.

*"Tonight's performance is a gift from our hearts"*  
—Al, Bill, Pete & Ken

# *Thank You to Our 2009 Guild Sponsors*

The Longfield Family  
Charitable Foundation  
*Rembrandt Sponsor*

---

John and Deb Tunis  
Brighton • *Monet Sponsor*

---

Complete Abandon  
Brighton • *Wyeth Sponsor*

Lee and Associates  
of Michigan  
Southfield • *Wyeth Sponsor*

Ore Creek Jewelers  
Brighton • *Wyeth Sponsor*

---

Four Seasons Florist  
Brighton • *Benefactor*

Pi's Asian Cuisine  
Brighton • *Benefactor*

Re-Style Staging  
Brighton • *Benefactor*

Sarah Jane Photography  
Brighton • *Benefactor*

---

Lorraine Cress  
Brighton • *Philanthropist*

Nancy Frawley  
Howell • *Philanthropist*

La Meena Mediterranean Grill  
Brighton • *Philanthropist*

---

Peggy N. Brewer  
Lakeland • *Patron*

Michael and Susan Doyle  
Brighton • *Patron*

Beth Gasperich, LMSW  
Brighton • *Patron*

Buon Gusto  
Brighton • *Patron*

Keehn Funeral Home  
Brighton • *Patron*

Majestic Maid Service  
Brighton • *Patron*

Paris Asthma and Allergy Center  
Brighton • *Patron*

St. George Lutheran Church  
Brighton • *Patron*

Stillwater Grill  
Brighton • *Patron*

Sushi Zen  
Brighton • *Patron*

Pawsitively Spoiled  
Brighton • *Patron*

Carole Skog McGeehan  
Brighton • *Patron*

---

Duncan Disposal Systems, LLC  
Howell • *Friend*

Hungry Howies of Brighton  
Brighton • *Friend*

Brenda Ochodnický  
Brighton • *Friend*

---